



Offshore

Sea Comfort



M.S. Sea Comfort is the ideal platform utilized as a hotel ship where specialized technicians are working at offshore sites.

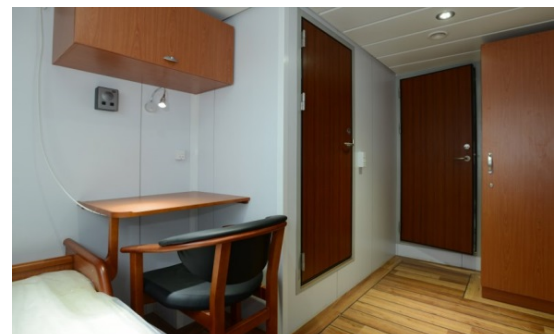
Her capacity for up to 12 passengers living in private cabins means it is ideally suited for inspection and maintenance crews.

In situations where the 50+ man hotel ships become cost prohibitive, M.S. Sea Comfort provides the solution.

Fast, versatile, stable and comfortable are the keywords of this ship. This enables us to fulfill such tasks as:

Accommodation at sea, crew transfer, stores supply, seabed surveys and VIP vessel. We are experienced operators in the offshore field, if you have request, please do not hesitate to contact us.

We look forward to working with you.





Offshore

MAIN

Design: Valling Ship Survey ApS

Flag: Dansk

Built: 2013 Tuco
Faaborg/Grenaa DK

Class: DMA

Passengers: 12 pax

Crew: 4/6- 12/24 hours

Range : 900 nm
(150 nm from shore)

Hull construction : GPR

Superstructure construction: GPR

Length o.a. : 25,30 m (excl bow
fender)

Beam: 11,3 m

Max draught: 2.2 m

GRT: 326

Speed: 15-21 knots

Bunker capacity: 20000 liters

Fresh water capacity: 5000 liters

Ballast water: 20000 liters

Black water: 5250 liters

Lube oil: 2 x 300 liters

Sloop oil: 2x 500 liters

Deadweigh light ship: approx. 122 t

Forward deck dimensions: 5,2 x 10,8 m

Total aft deck capacity: 43,6 m²

Aft deck dimensions: 4 x 10,9 m

IMO number: 9674282

Engines rating: 2 x 1007 kw a 1900 rpm

Engine: 2 x Cummins KTA 38-M2

Propulsion: 2 x Servo gear Pitch
Propelleers ø1325

Gear box: 2 x Servo gear HD 295

Generators: 2 x Cummins 6B-CP
80kwa

Bow Thruster: 2 x 35kW

CARGO HANDLING

Max cargo capacity on deck: 12t

Deck strength: 2 t/m²

Cranes: 2 x Palfinger 12001
1,1TM

Max lifting capacity at max outreach:
SWL 400 kg / 14,6 mtr in winch

Max lifting capacity: 6790 kg

A Frame:

Anchor Winch: 1 x AS ScanType RR800-1, 3t

NAVIGATION AND COMMUNICATION

Radar: 2 x Transas Navi rader 4000 X band

Electronic chart: Sodena



Offshore

Satellit kompas: Simrad HS80

DGPS: Simrad MX510

AIS: Simrad Class A

Weatherstation: Airmar Ultrasonic

Joystick pilot system: Navis JP4000

GMDSS area A2:

VHF/DSC: Sailor VHF DSC-A

MF/DSC: Sailor system 6000

Navtex: JRC

VHF: Sailor 6248 VHF

VHF/UHF: Icon

Crew finder: RT-202 Rhotheta

Ekkolod: JRC 50/200 KHZ black box

Log: Almar Ultrasonic speed

Satellit TV: KNS 61 cm

Satellit Internet: KNS 61 cm

PASSENGER FACILITIES

12 Comfortable cabins with TV and with toilet/Shower

Comfortable passenger lounge with 16 seats

12 Comfortable passenger lounge with mechanical

Suspension Seat and with safety belts

TV lounge with sofa lounges and flat screens

Gallery, Toilet/Shower and change room

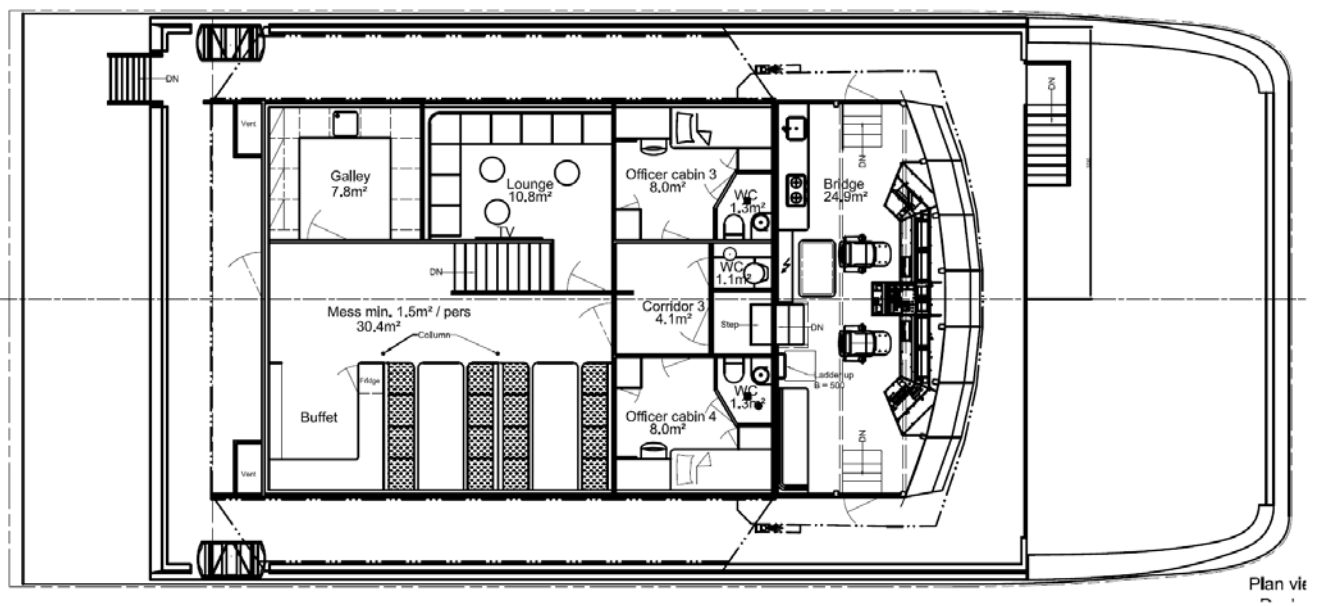
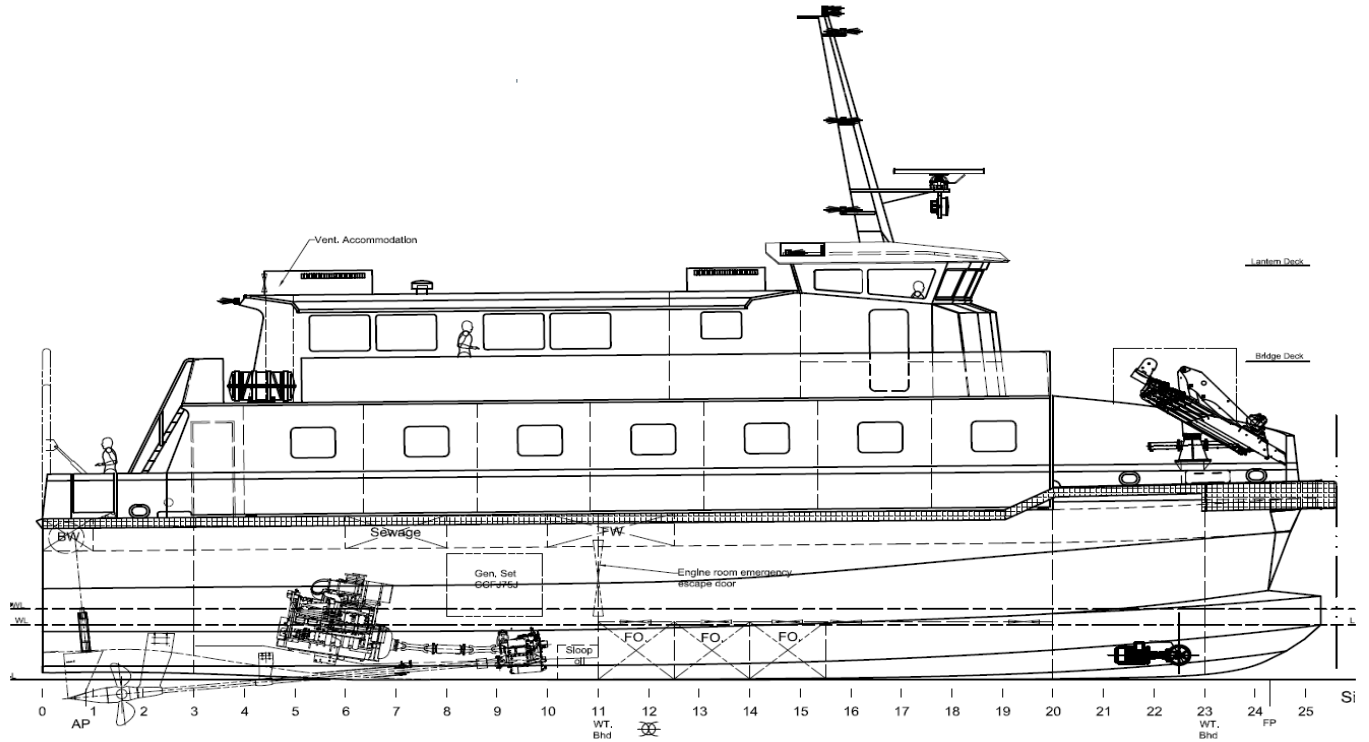
CREW FACILITIES

6 Comfortable cabins with TV and with Toilet/Shower box





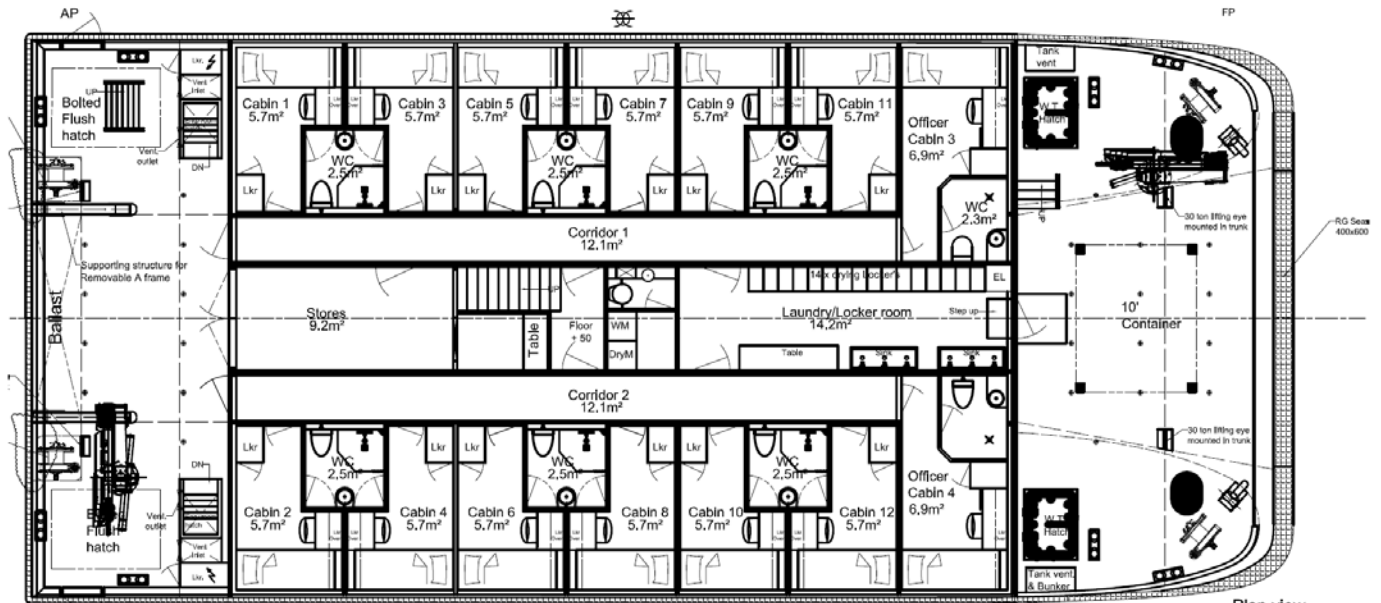
Offshore



Plan vlt



Offshore



Plan view
Main Deck / Deck 1

